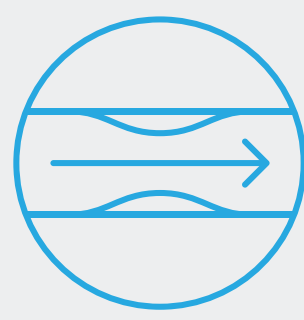


Up to 3.8 x faster
deflation times



Enhanced
crossability



High pushability
and flexibility

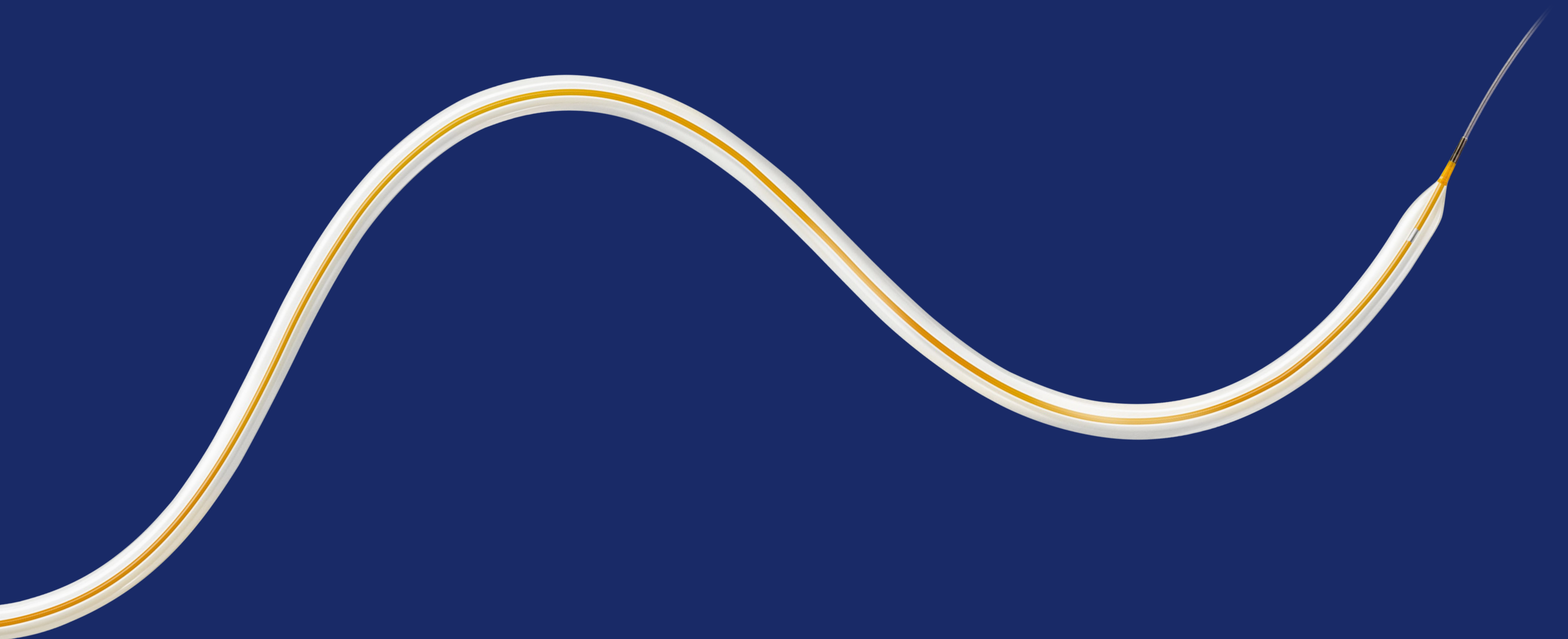


Technical data/
ordering info

Teleflex[™]
Empowering the future of healthcare

Passeo[™]-14

PTA Balloon Catheter



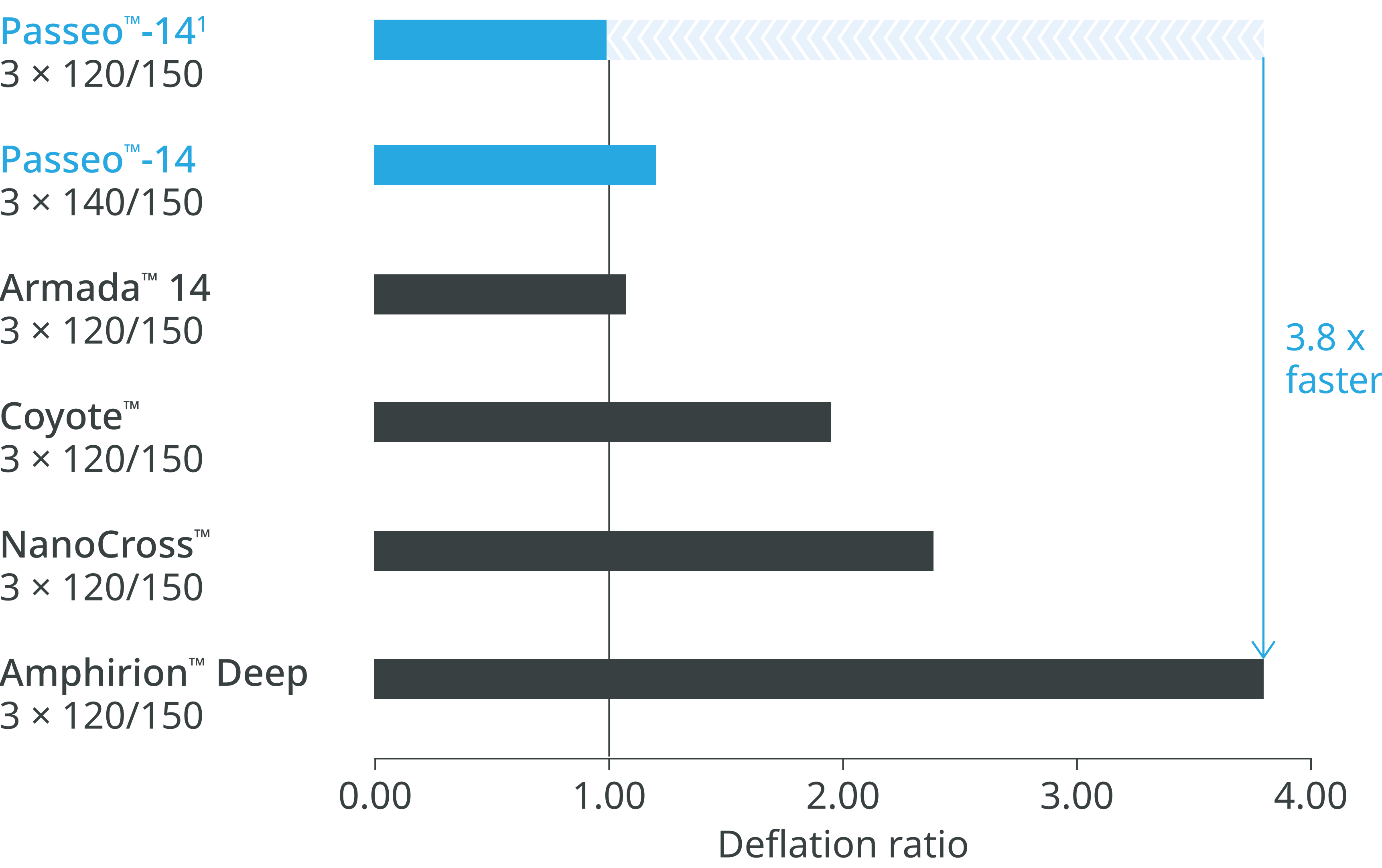
Passeo™-14 Balloon

Faster deflation times, enhanced crossability, high pushability and flexibility.

Up to 3.8 × faster deflation times¹

Due to the coaxial catheter shaft design that creates a large balloon lumen facilitating rapid inflation and deflation, Passeo™-14 Balloon deflates:

- 3.8 × faster than Amphirion™ Deep Balloon
- 2.0 × faster than Coyote™ Balloon
- 2.4 × faster than NanoCross™ Balloon



The only forefront solution offering dedicated below the ankle sizes

- ø 1.5–2.0 mm
- 150 mm flexible distal shaft
- Tailored stiffening wire



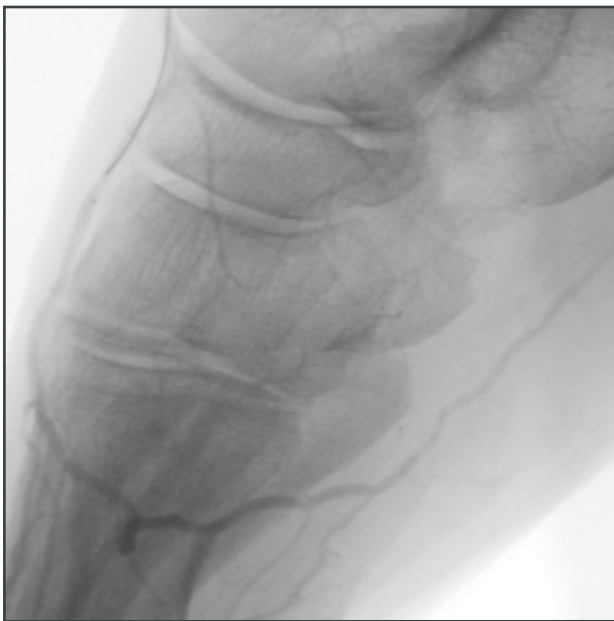
Pre-treatment



Dilatation
pedal arch



Dilatation
plantar arch



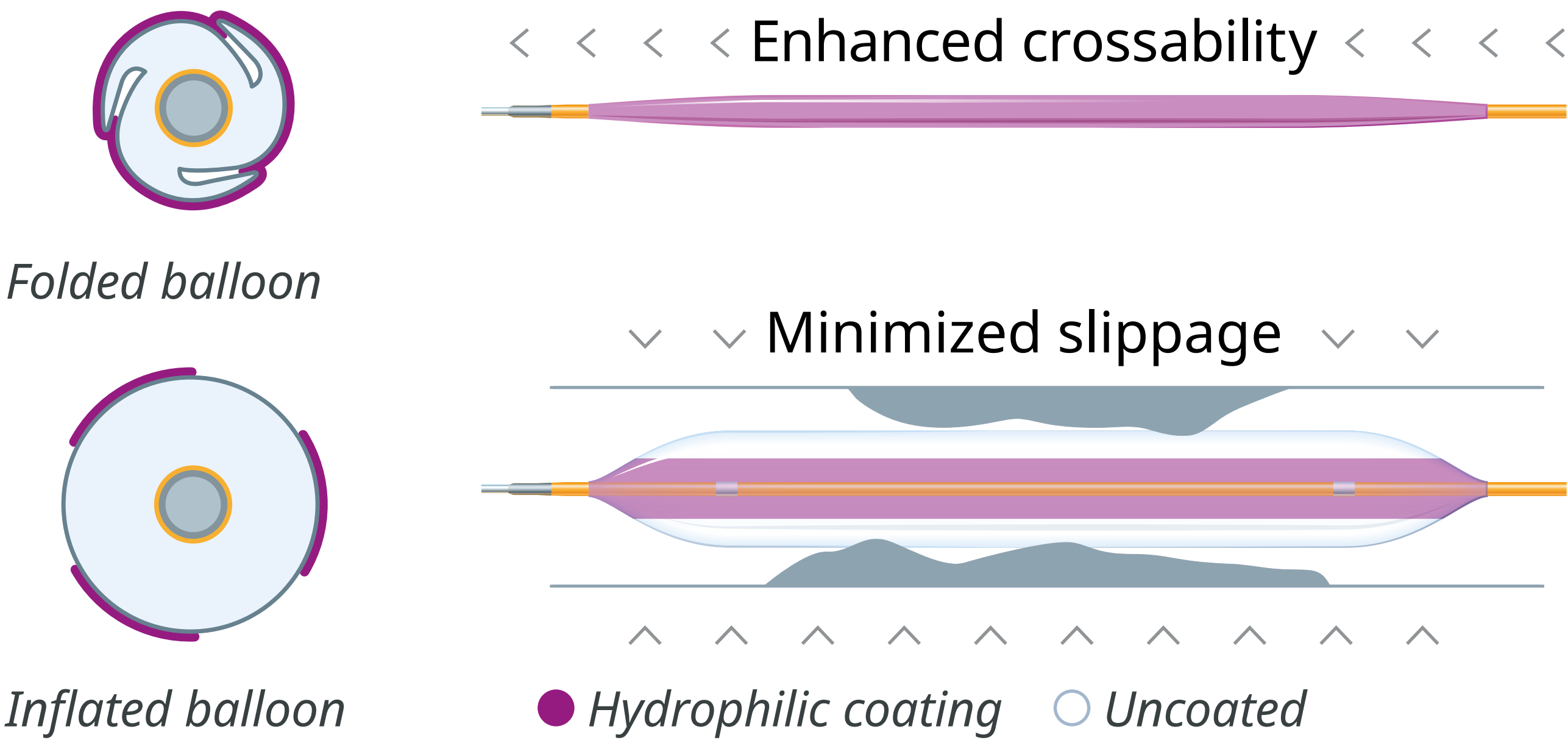
Post dilatation

Courtesy of Dr. L. Steffanon, Vicenza, Italy



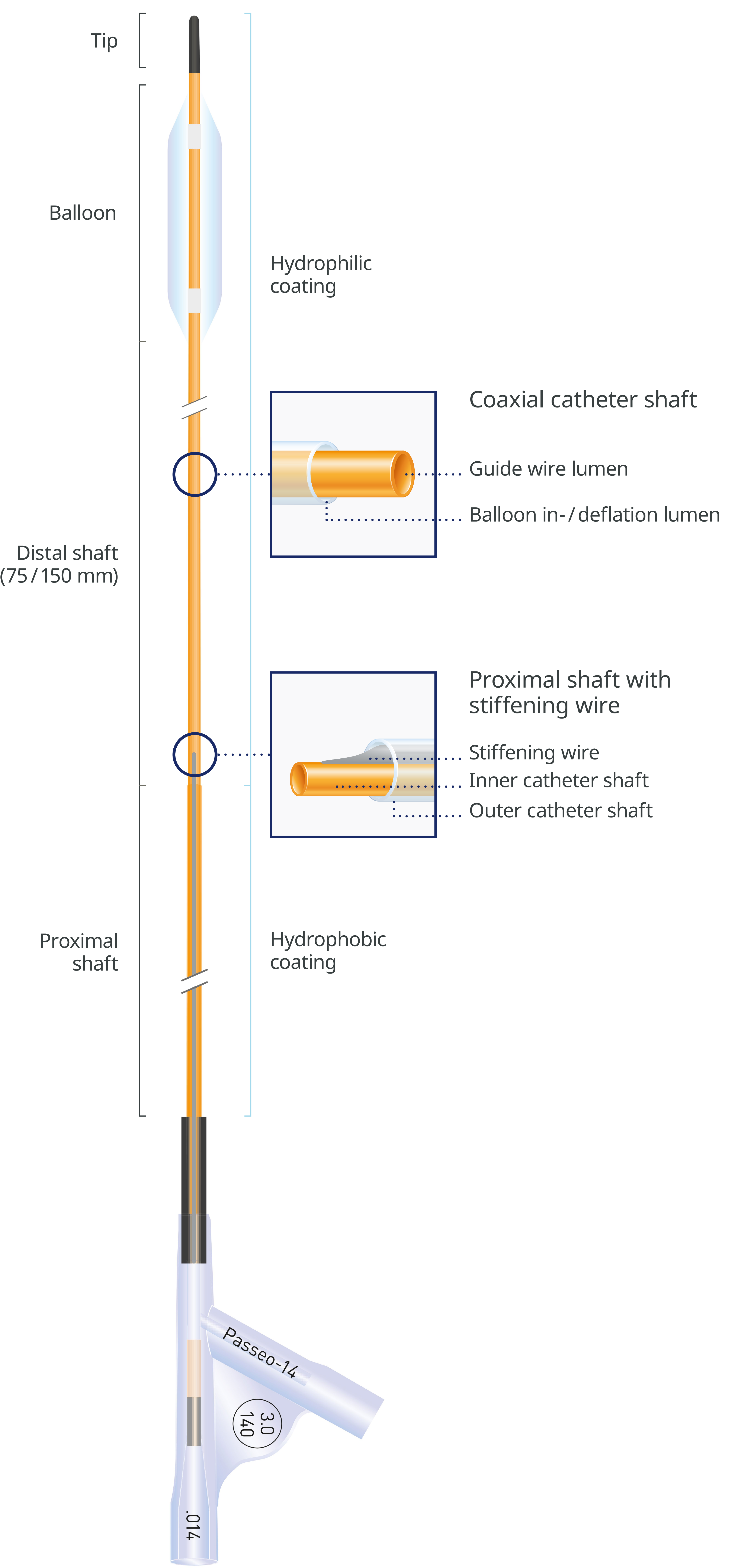
Enhanced crossability

The tri-fold balloon, which is fully coated when folded and only partly coated when inflated, enables an enhanced crossability while minimizing slippage during inflation.



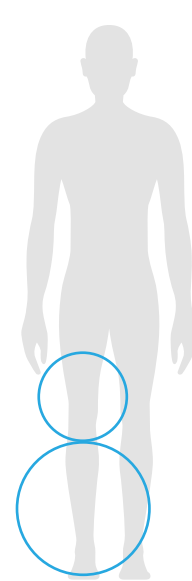
High pushability and flexibility²

Impressive pushability due to catheter shaft design featuring a unique stiffening wire in the proximal shaft of the catheter, while enabling high flexibility due to a lower profile distal shaft in small, tortuous vessels.



Passeo™ -14 Balloon

Vascular
Intervention
Peripheral



Indicated for balloon dilatation of the stenotic portion of a lower limb artery for the purpose of improving perfusion.

Technical data

BALLOON CATHETER	
Catheter type	OTW
Recommended guide wire	0.014"
Tip	Optimized entry profile and colored
Balloon material	SCP (Semi-Crystalline Polymer), controlled compliance (4–6 %)
Balloon folding	3-fold
Balloon coating	Hydrophobic patchwork coating
Balloon markers	2 swaged markers (zero profile)
Sizes	ø 1.5–4.0 mm; L: 20–220 mm
Distal shaft	3.1F, hydrophilic coating, coaxial design; 150 mm length (ø 1.5/2.0 × 20–100 mm); 75 mm length (ø 2.0 × 140–220 mm and ø 2.5–4.0 mm)
Proximal shaft	3.9F, hydrophobic coating, coaxial design; stiffening wire
Usable length	150 cm (ø 1.5–4.0 mm); 120 cm (ø 1.5–2.0 mm); 90 cm (ø 2.5–4.0 mm)

Compliance Chart

		BALLOON DIAMETER × LENGTH (MM)					
		ø 1.5 × 20–70	ø 2.0 × 40–220	ø 2.5 × 40–220	ø 3.0 × 40–220	ø 3.5 × 40–140	ø 4.0 × 40–140
Nominal Pressure (NP)	atm*	7	7	7	7	7	7
	ø (mm)	1.50	2.00	2.50	3.00	3.50	4.00
Rated Burst Pressure (RBP)	atm*	14	14	14	14	14	14
	ø (mm)	1.57	2.08	2.61	3.18	3.63	4.16

*1 atm = 1.013 bar

Ordering Information

CATHETER LENGTH		BALLOON Ø	BALLOON LENGTH			
			20 mm	40 mm	70 mm	100 mm
4F Antegrade approach	120 cm	1.5 mm	380271	380277	380283	-
	120 cm	2.0 mm	-	380278	380284	380290
	90 cm	2.5 mm	-	380279	380285	380291
	90 cm	3.0 mm	-	380280	380286	380292
	90 cm	3.5 mm	-	380281	380287	380293
	90 cm	4.0 mm	-	380282	380288	380294

CATHETER LENGTH		BALLOON Ø	BALLOON LENGTH		
			140 mm	180 mm	220 mm
4F Antegrade approach	120 cm	1.5 mm	-	-	-
	120 cm	2.0 mm	380296	380302	380308
	90 cm	2.5 mm	380297	380303	380309
	90 cm	3.0 mm	380298	380304	380310
	90 cm	3.5 mm	380299	-	-
	90 cm	4.0 mm	380300	-	-

CATHETER LENGTH		BALLOON Ø	BALLOON LENGTH			
			20 mm	40 mm	70 mm	100 mm
4F Crossover approach	150 cm	1.5 mm	380313	380319	380325	-
	150 cm	2.0 mm	-	380320	380326	380332
	150 cm	2.5 mm	-	380321	380327	380333
	150 cm	3.0 mm	-	380322	380328	380334
	150 cm	3.5 mm	-	380323	380329	380335
	150 cm	4.0 mm	-	380324	380330	380336

CATHETER LENGTH		BALLOON Ø	BALLOON LENGTH		
			140 mm	180 mm	220 mm
4F Crossover approach	150 cm	1.5 mm	-	-	-
	150 cm	2.0 mm	380338	380344	380350
	150 cm	2.5 mm	380339	380345	380351
	150 cm	3.0 mm	380340	380346	380352
	150 cm	3.5 mm	380341	-	-
	150 cm	4.0 mm	380342	-	-

References:

- 1 Data on file. Volume adjustment: A 3 mm × 120 mm balloon contains 17 % less contrast media volume than a 3 mm × 140 mm balloon. The measured deflation time of a 3 mm × 140 mm balloon was adjusted by 17 % to make a direct competitive comparison.
- 2 Data on file.

Teleflex, the Teleflex logo and Passeo are trademarks or registered trademarks of Teleflex Incorporated or its affiliates in the U.S. and/or other countries. All other trademarks marked with a ™ are the property of their respective owners and are solely used for identification purposes and do not imply any affiliation, endorsement, or ownership by Teleflex Incorporated or its affiliates. Information in this material is not a substitute for the product Instructions for Use. Not all products may be available in all countries. Please contact your local representative.

© 2025 Teleflex Incorporated. All rights reserved.

398937-EN · REV F · 09 25 PDF · DV

Distributed by:

Teleflex Headquarters International, Ireland · Teleflex Medical Europe Ltd. · IDA Business & Technology Park
Dublin Road · Athlone · Co Westmeath · Tel. +353 (0)9 06 46 08 00 · Fax +353 (0)14 37 07 73 · orders.intl@teleflex.com
United Kingdom Tel. +44 (0)14 94 53 27 61 · info.uk@teleflex.com
South Africa Tel. +27 (0)11 807 4887 · assist.africa@teleflex.com

teleflex.com

Teleflex™
Empowering the future of healthcare