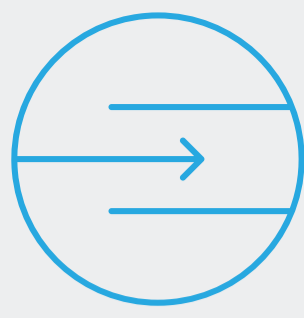
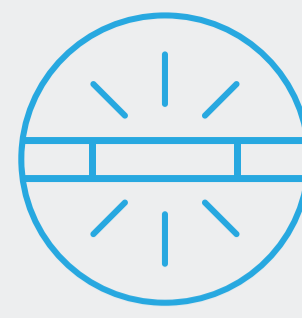




Excellent kink
and deformation
resistance



Easy insertion



Superb radiopacity



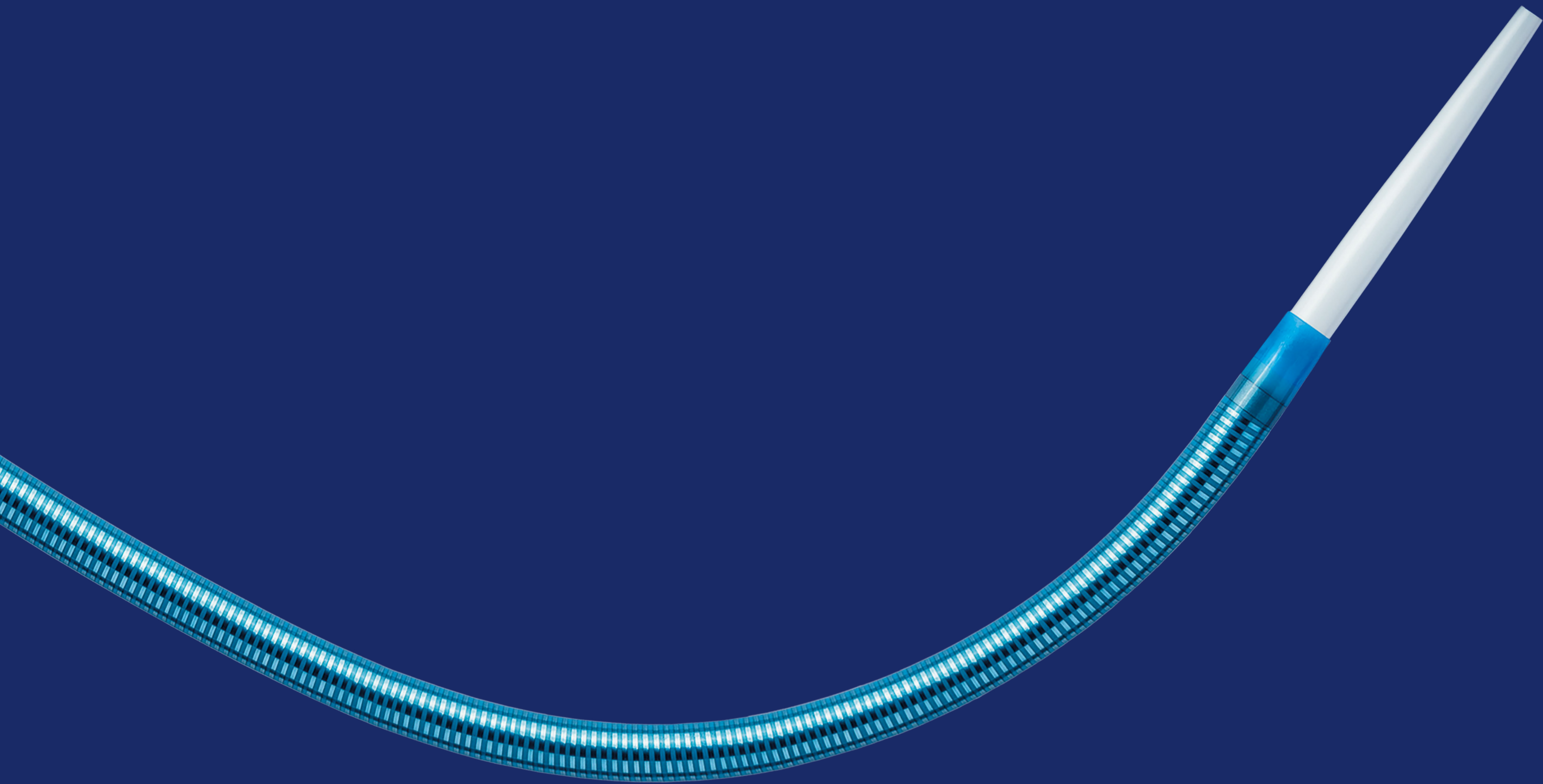
Technical data /
ordering info

Teleflex[™]
Empowering the future of healthcare

Fortress[™]

Reinforced Introducer Sheath System

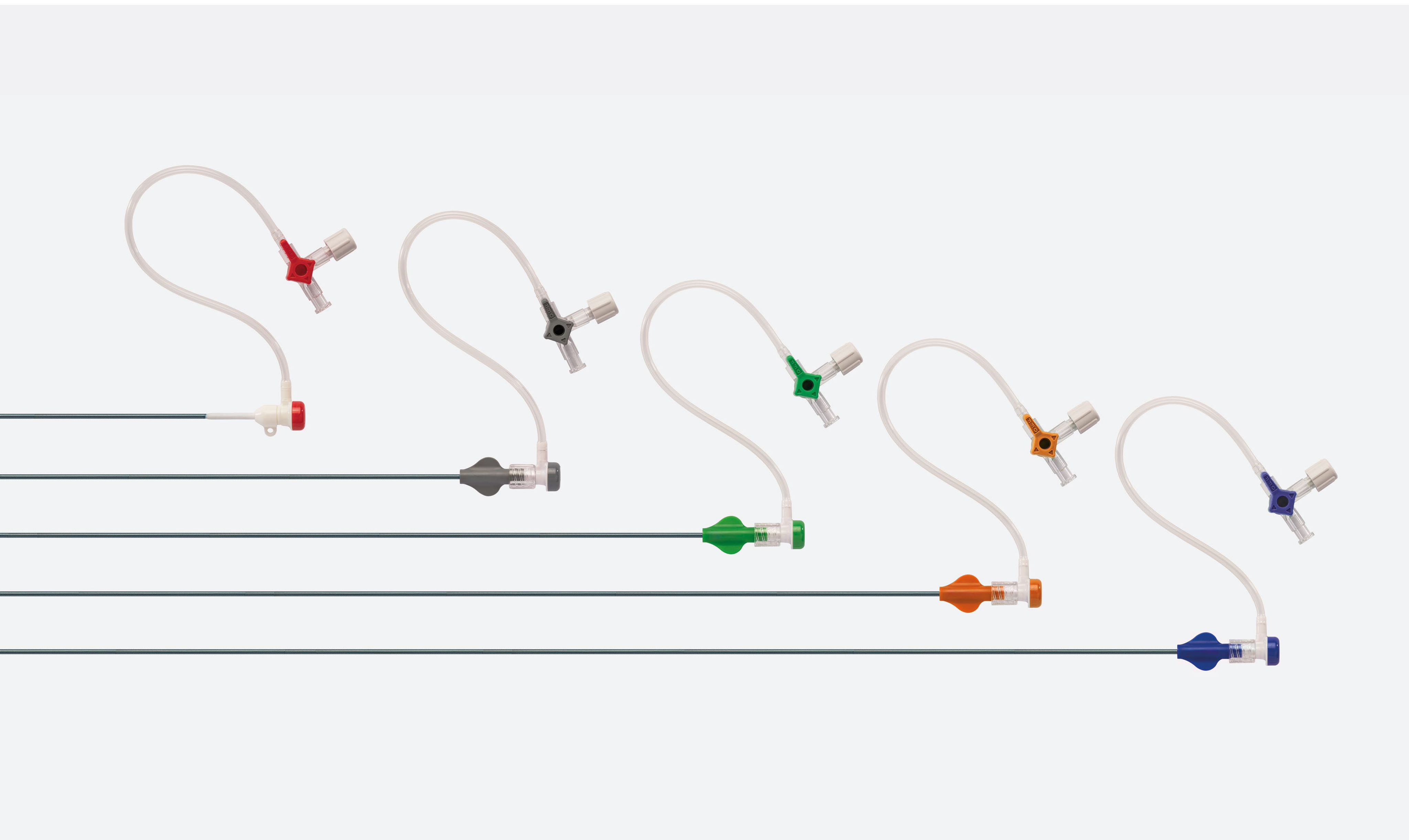
Introducer sheath system with excellent kink resistance,
easy insertion and superb radiopacity.





Fortress™ Introducer Sheath

Introducer sheath system with excellent kink resistance, easy insertion and superb radiopacity.



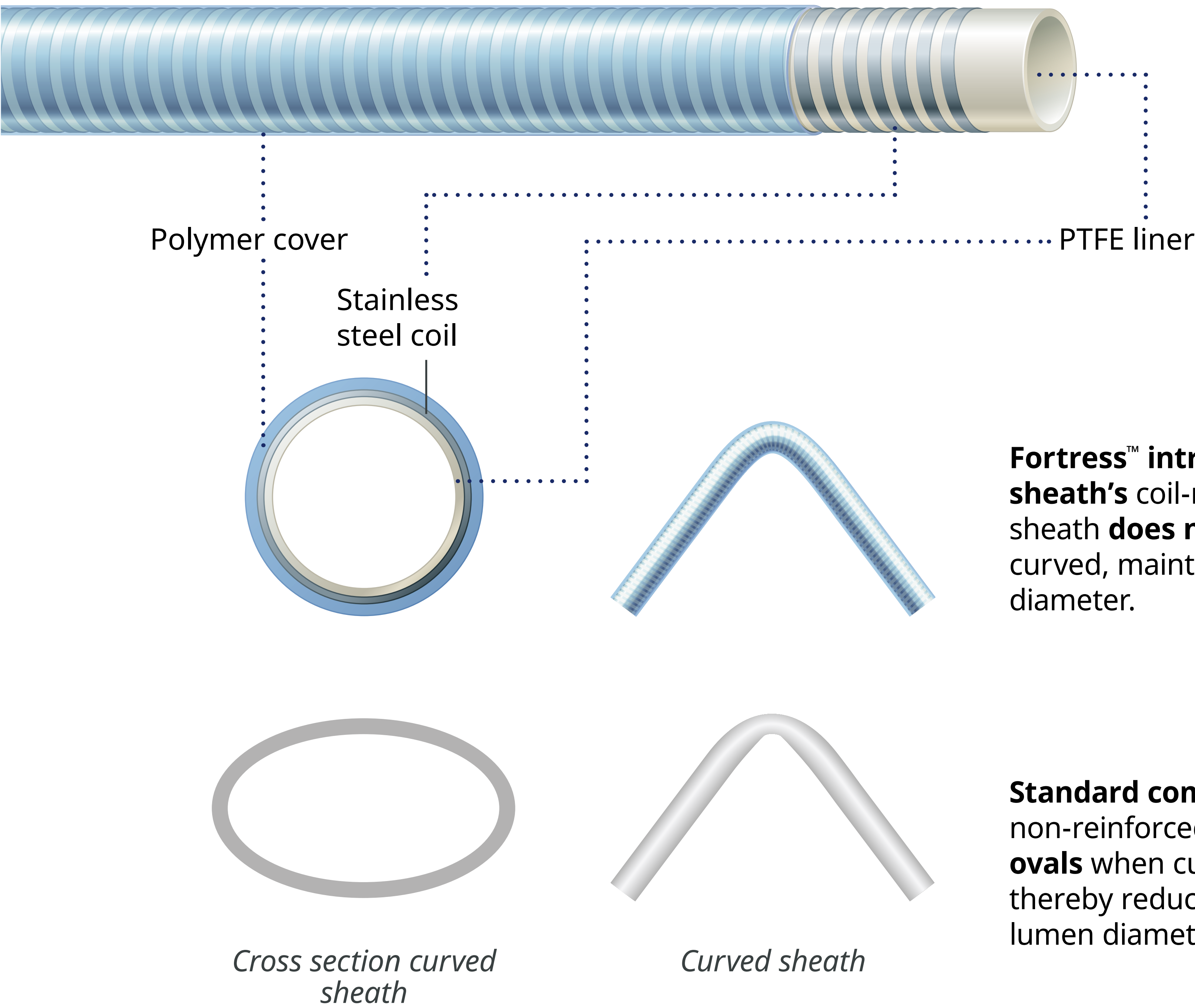
Excellent kink and deformation resistance

Coil reinforced sheath

The polymer embedded stainless steel coil shaft provides flexibility and excellent kink and deformation resistance.

PTFE liner

The non-ovaling characteristic combined with its friction lowering PTFE liner enables devices to easily pass through tight anatomical curves.





Easy insertion

Smooth tapered sheath and dilator tip

The sheath and dilator have a smooth tapered tip and an atraumatic tip design for ease of insertion.

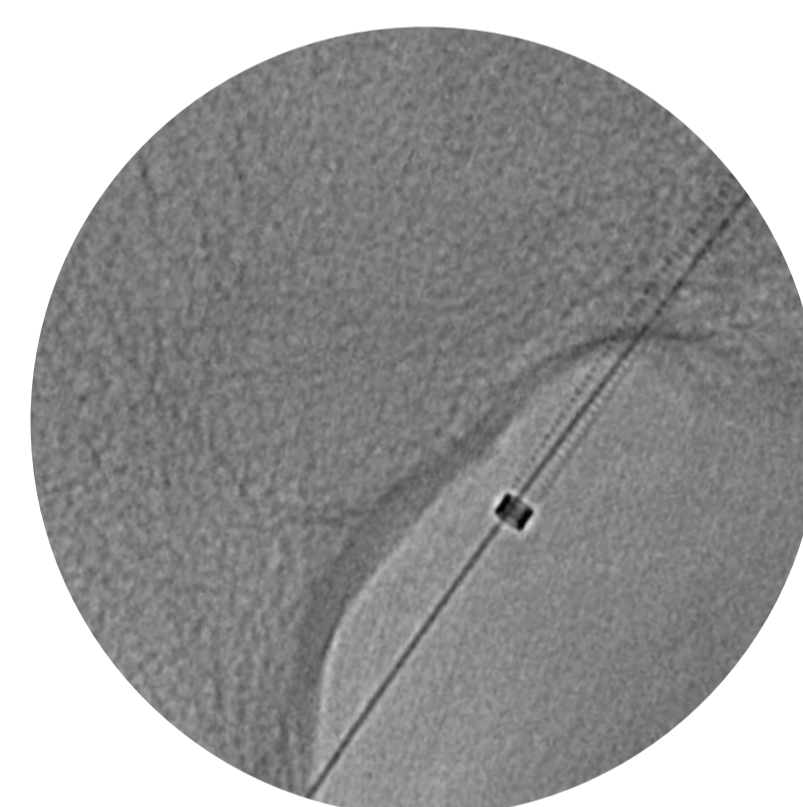
Hydrophobic coated sheath¹

Best in class insertion performance² due to the hydrophobic sheath coating in combination with the smooth tapered sheath and dilator tip.

Superb radiopacity

Radiopaque sheath marker

The platinum alloy marker band provides superb tip radiopacity under fluoroscopic imaging.²



Fortress™ 4F introducer sheath in the pelvic area

Minimal is optimal

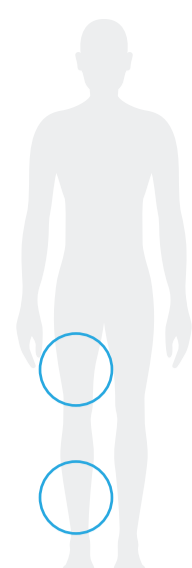
The 4F Solutions product portfolio allows for treatment of complex lower limb disease while reducing access site complications.

4F



Fortress™ Introducer Sheath

Vascular
Intervention
Peripheral



Indicated to provide access into the femoral, popliteal and infrapopliteal arteries.*

Technical data

INTRODUCER SHEATH	
French size	4F, 5F, 6F, 7F and 8F
Length	45, 65 and 90 cm
Sheath material	Stainless steel coil reinforced polymer, PTFE liner
Sheath tip	Smooth taper with radiopaque marker band located 3-5 mm from the sheath tip
Sheath shape	Pre-curved 45 cm Straight 45, 65 and 90 cm
Sheath coating	Hydrophobic, distal 30 cm (5F, 6F, 7F and 8F only)

DILATOR	
Recommended guide wire	0.035"
Tip	Smooth taper with radiopaque filler material
Shape	Pre-curved and straight
Hub	4 F: fixed hemostatic valve 5 F, 6 F, 7 F, 8 F: removable hemostatic valve Side-arm with color coded 3-way stop cock

Ordering Information

	SHEATH LENGTH	SHEATH SHAPE	INTRODUCER DESCRIPTION	CATALOGUE NUMBER	DILATOR(S) INCLUDED	UNITS PER BOX
4F	45 cm	Curved	Crossover	358813	Curved/Straight	5
	45 cm	Straight	Straight-45	358814	Curved/Straight	5
	65 cm	Straight	Straight-65	444486	Straight	5
	90 cm	Straight	Straight-90	444485	Straight	5
5F	45 cm	Curved	Crossover	386590	Straight	5
	45 cm	Straight	Straight-45	386591	Straight	5
	65 cm	Straight	Straight-65	444484	Straight	5
	90 cm	Straight	Straight-90	444483	Straight	5
6F	45 cm	Curved	Crossover	386593	Straight	5
	45 cm	Straight	Straight-45	386594	Straight	5
	65 cm	Straight	Straight-65	444482	Straight	5
	90 cm	Straight	Straight-90	444481	Straight	5
7F	45 cm	Curved	Crossover	452386	Straight	5
	45 cm	Straight	Straight-45	452382	Straight	5
	65 cm	Straight	Straight-65	452383	Straight	5
	90 cm	Straight	Straight-90	452388	Straight	5
8F	45 cm	Curved	Crossover	452387	Straight	5
	45 cm	Straight	Straight-45	452385	Straight	5
	65 cm	Straight	Straight-65	452384	Straight	5
	90 cm	Straight	Straight-90	452389	Straight	5

*Indication as per IFU.

- References:**
1 5 F, 6 F, 7 F and 8 F.
2 Data on file.

Teleflex, the Teleflex logo and Fortress are trademarks or registered trademarks of Teleflex Incorporated or its affiliates in the U.S. and/or other countries. Information in this material is not a substitute for the product Instructions for Use. Not all products may be available in all countries. Please contact your local representative. Revised: 10/2025.

© 2025 Teleflex Incorporated. All rights reserved.

404774-EN · REV H · 10 25 PDF · DV

Distributed by:
Teleflex Headquarters International, Ireland · Teleflex Medical Europe Ltd. · IDA Business & Technology Park
Dublin Road · Athlone · Co Westmeath · Tel. +353 (0)9 06 46 08 00 · Fax +353 (0)14 37 07 73 · orders.intl@teleflex.com
United Kingdom Tel. +44 (0)14 94 53 27 61 · info.uk@teleflex.com
South Africa Tel. +27 (0)11 807 4887 · assist.africa@teleflex.com

teleflex.com

Teleflex™
Empowering the future of healthcare